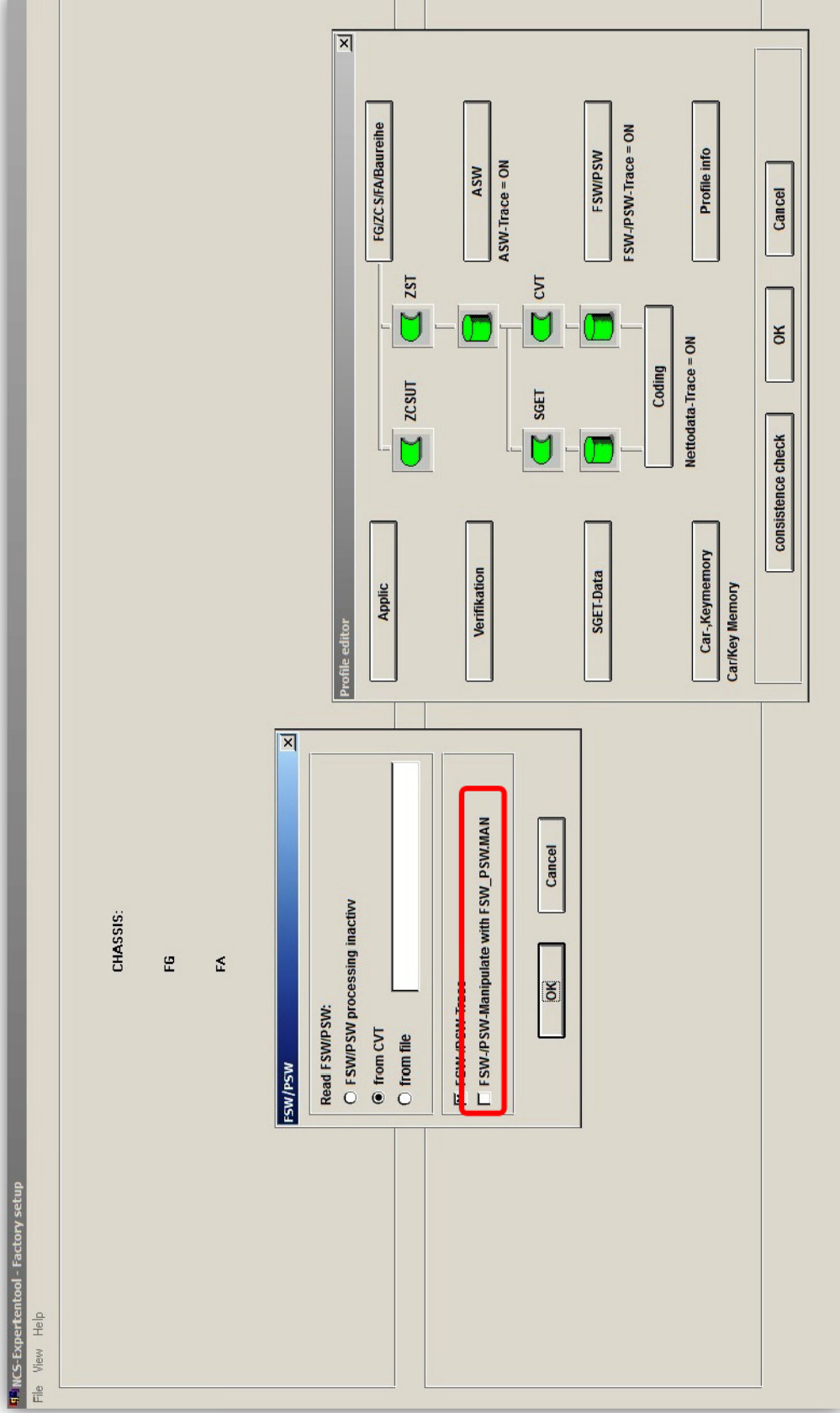


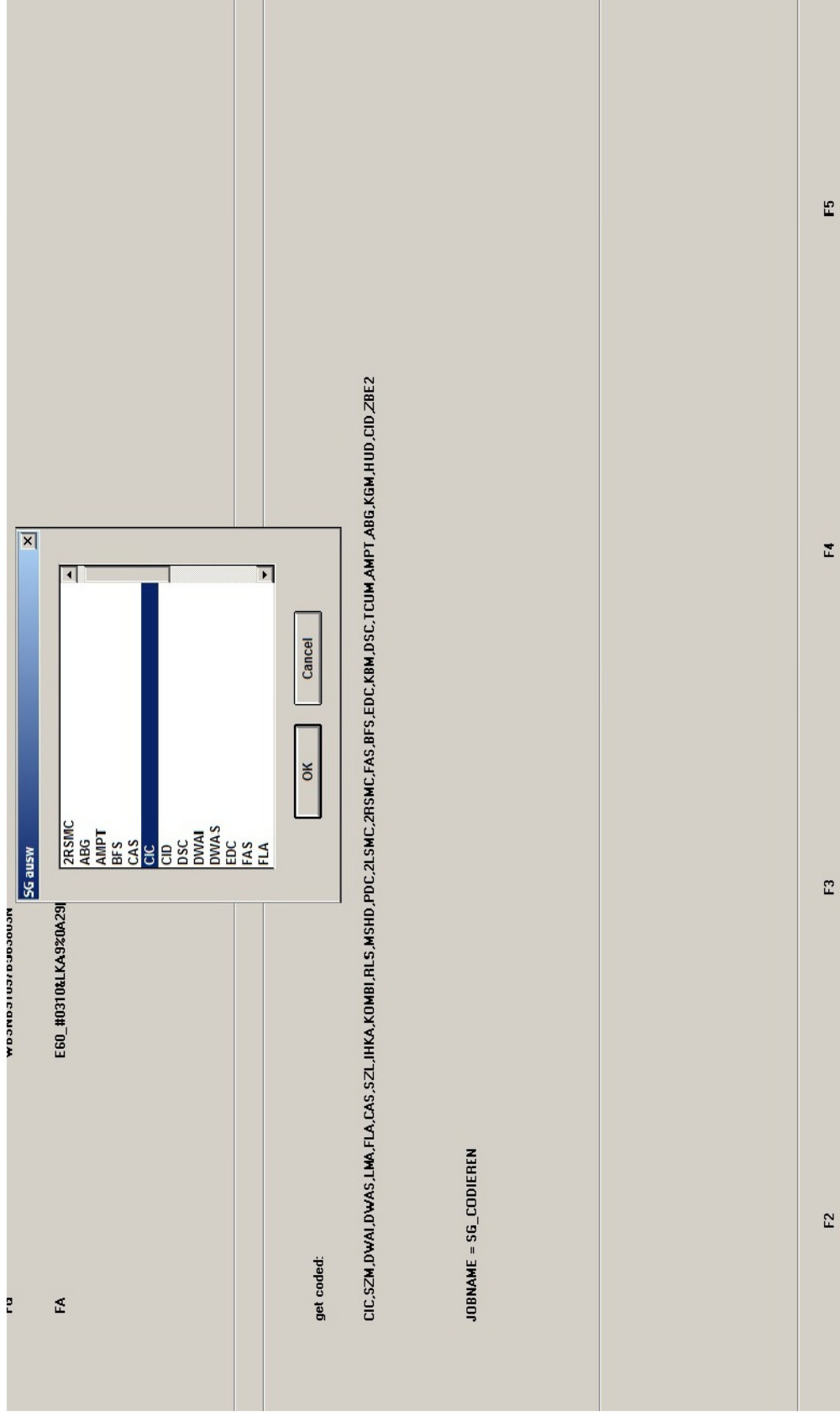
## DIY : Coding factory setting for any ECU using NCS

Assuming you are familiar with NCS and you've used it before

- 1- Open NCS , Choose Expertmode Profile ,  
if you don't have Expertmode profile , Load the profile you are always using then click File -> Edit profil -> FSW/PSW  
and uncheck the option in the red box -> Click OK -> Click Profile info -> check the Profil name to any name you prefer -> click OK ->  
Click OK to close the profile editor -> click File -> save profile as -> give it any name you like , and you have a profile for loading factory  
setting to any ECU in the car .



- 2- Press F1 -> F3 and choose your car chassis from the list -> press OK -> Press F6
- 3- Press F4 -> choose the ECU you would like to code with factory default options of your car -> Press OK



- 4- Press F2 -> choose "SG\_CODIEREN" -> press OK
- 5- Press F3 to start coding the ECU with the factory setting according to your VO ,

The screenshot shows a software interface with a menu selection dialog box open. The dialog box has a title bar with 'Job: eusw' and a list of options. 'SG\_CODIEREN' is selected. Below the dialog box, the main interface shows the following text:

```

FA
EG0_H0310&LKA9%
Job: eusw

get coded:
CIC

JOBNAME = SG_CODIEREN
CIC.C09, A_CIC.IPD, CICR.PRG
  
```

At the bottom of the screen, there is a horizontal bar with five function key buttons labeled F2, F3, F4, and F5:

- F2: Job
- F3: Execute job
- F4: Read ECU
- F5: Basic functions

Mission accomplished .